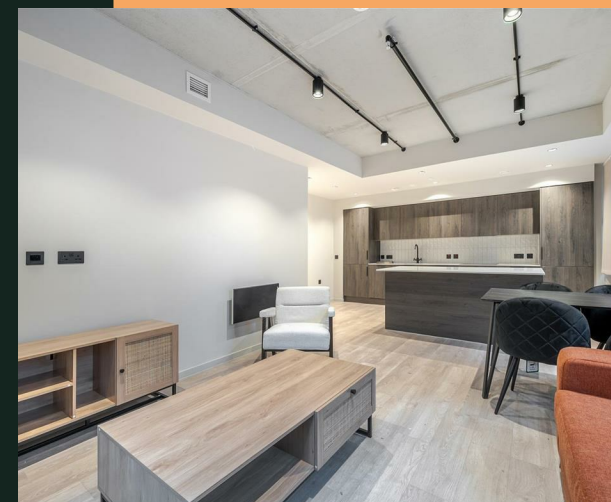


Ludgate Hill, B3



PROPERTY ADDRESS
Apartment 207
50 Ludgate Hill
Birmingham
B3 1FG

| Energy Efficiency Rating | | Current | Potential |
|---|----------------------------|---------|-----------|
| Very energy efficient - lower running costs | | | |
| (92 plus) A | | | |
| (81-91) B | | 82 | 82 |
| (69-80) C | | | |
| (55-68) D | | | |
| (39-54) E | | | |
| (21-38) F | | | |
| (1-20) G | | | |
| Not energy efficient - higher running costs | | | |
| England & Wales | EU Directive 2002/91/EC | | |

Call Us
01215162222

Email Us
solihull@vision-properties.co.uk

vision

We look at
estate agency
differently.

vision

- Total cost of first month: £3,392.30 (rent & deposit)
- Brand new
- Available now
- Co-working lounge
- Wellness studio

We're pleased to offer the first chance to rent this stunning new build apartment. The property comes furnished and benefits from high spec fixtures and fittings throughout.

It briefly comprises of a bright and airy open plan living, dining and kitchen area with integrated appliances, two bedrooms (one with an en-suite) and a main bathroom.

Residents have access to the on-site wellness studio, co-working lounge and rooftop garden with fantastic city scape views.

SETL is located in the popular Jewellery Quarter just off St Paul's Square, with easy access to all the shops, bars and restaurants of the city centre. It also benefits from excellent transport links including New Street, Snow Hill and Grand Central stations.

Nearby parking available from £140 per month.

Available immediately subject to acceptable references.

Rent: £1,575 per calendar month
Holding deposit: £363.46
Deposit: £1,817.30



Your Text Here

